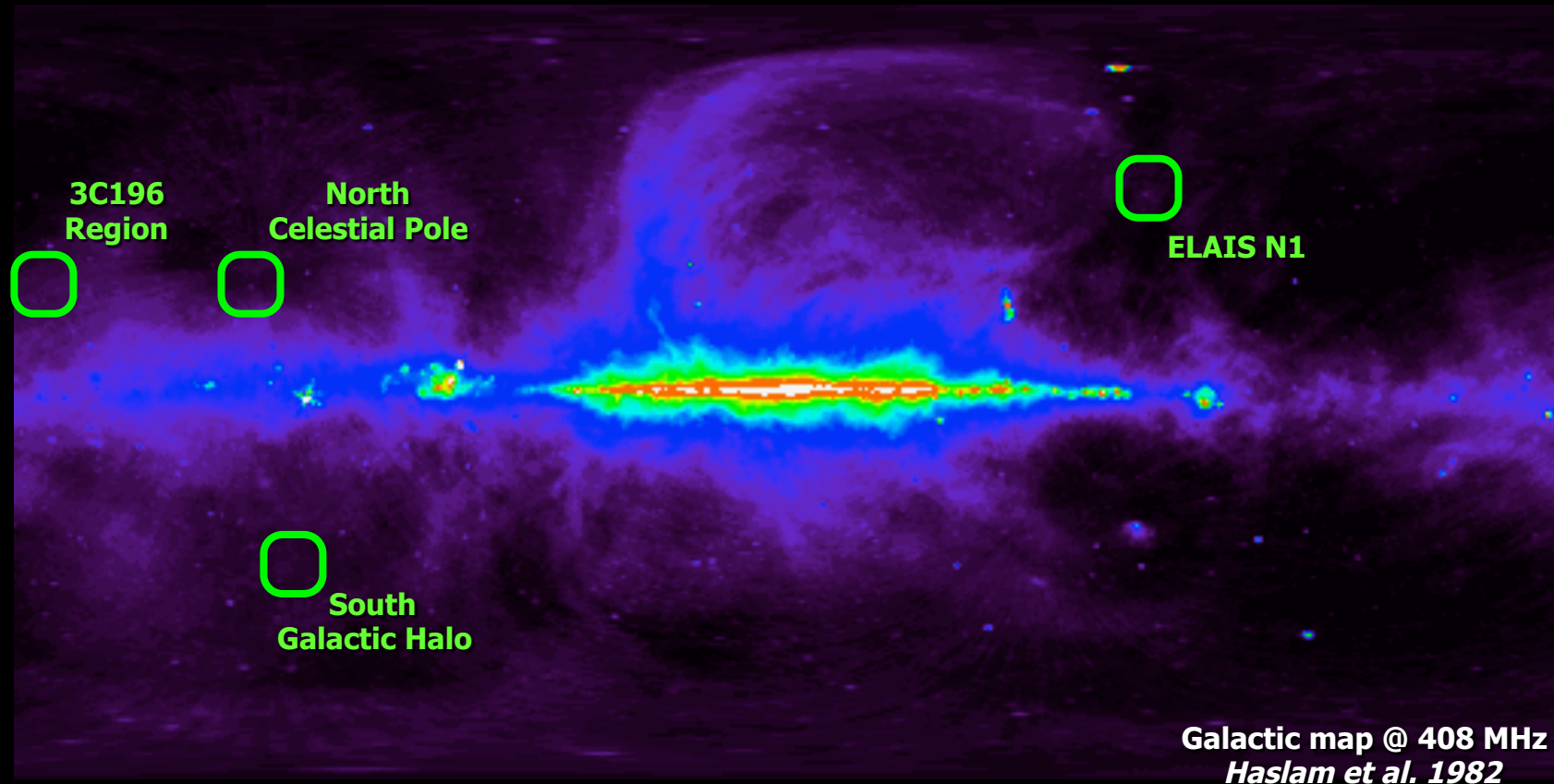


## Commissioning results for the ELAIS field

**Vibor Jelić**

# LOFAR-EoR experiment: **observations**



# LOFAR-EoR experiment: Elais N1 field

---

- European Large Area ISO Survey – North 1 field
- RA 16h14m00s Dec +54:30:00
- motivation: one of Subaru fields and  
observed at many other wavelengths
- no bright sources ( $< 2$  Jy)

➤ LOFAR – HBA observation @ 138 – 185 MHz  
July 2012, 7h, 244 sb, CR+RS stations (55)

# LOFAR-EoR experiment: Elais N1 central field

---

## RO – CEP2 cluster

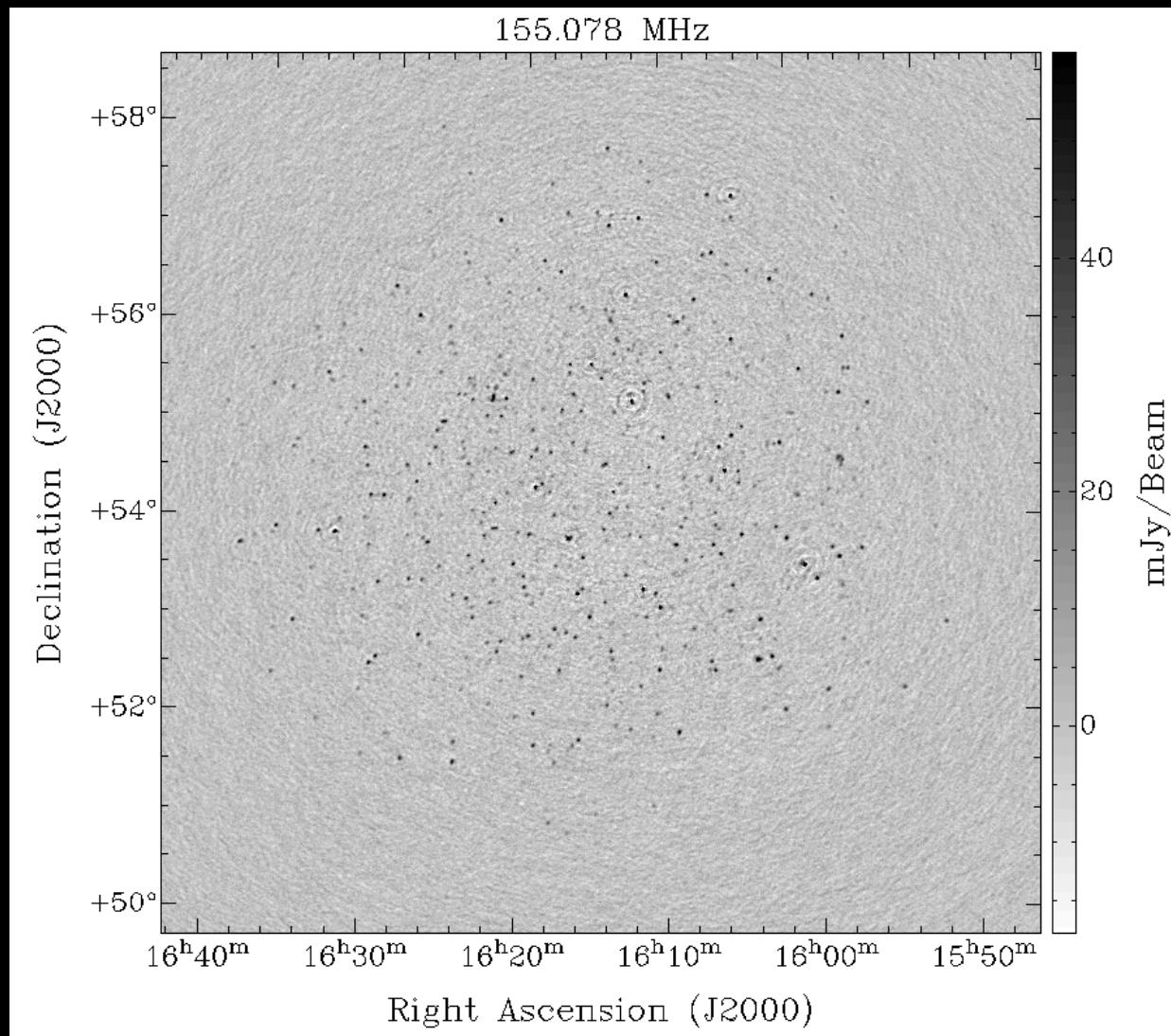
- AO flagger (standard)
- NDPPP avg. to *15 channels* and *2 sec*

## VJ – EoR cluster

- BBS (*solve, correct*) with the skymodel based on 30 sources (gsm.py)
- NDPPP flagging of CORRECTED DATA column
- NDPPP avg. of CORRECTED DATA to *1 channel* and *10 sec*
- BBS (*solve, correct*) with the skymodel based on 30 sources
- NDPPP flagging of CORRECTED DATA column
- Imaged with CASA

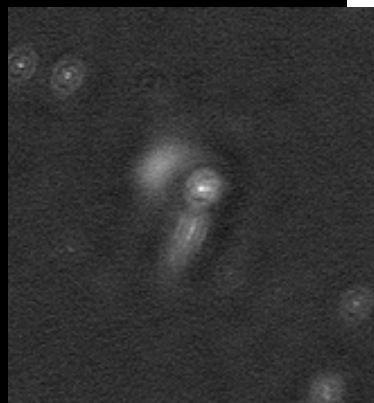
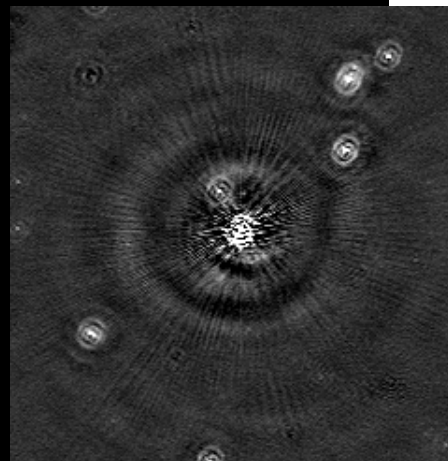


# LOFAR-EoR experiment: Elais N1 central field

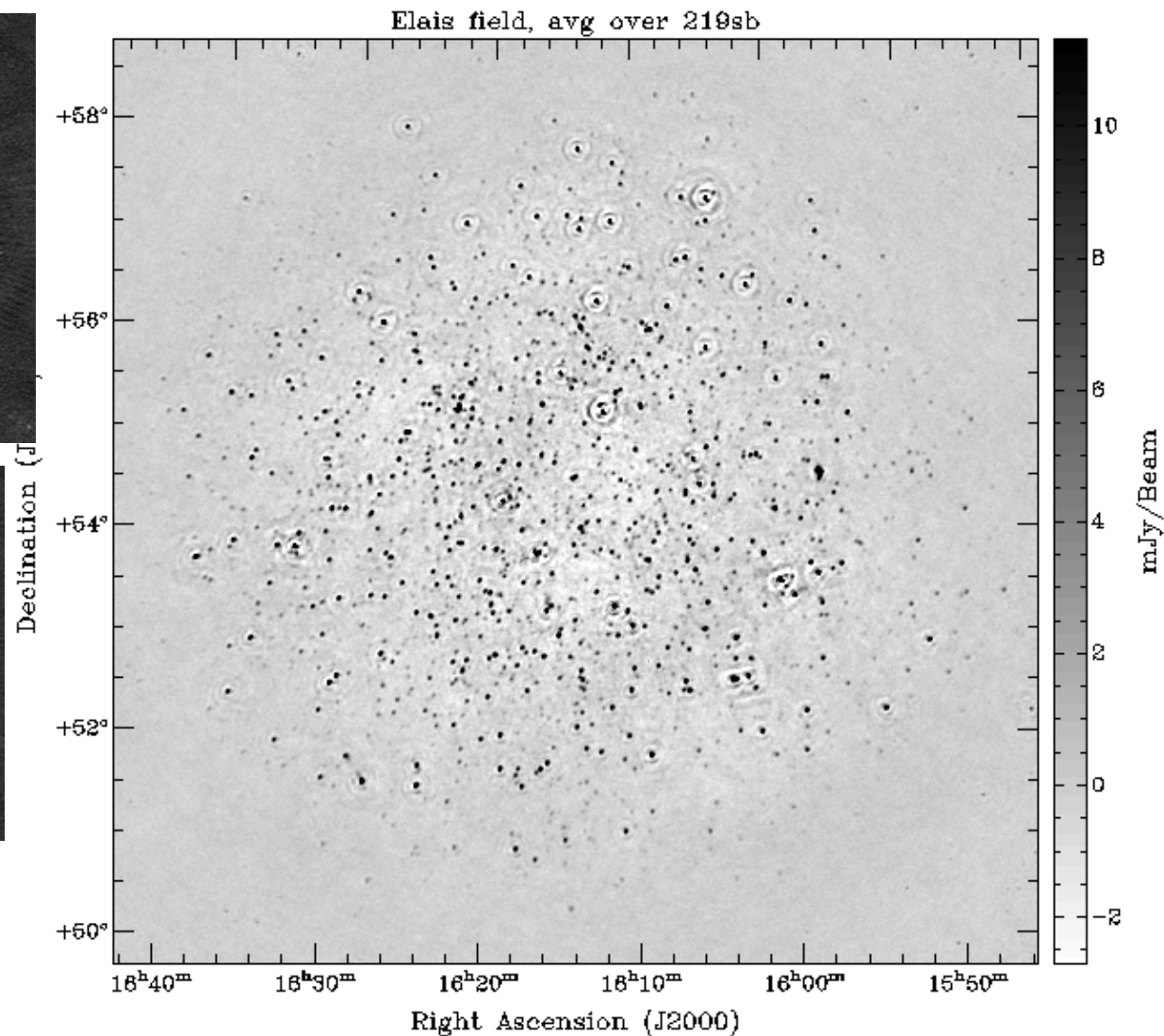


8 arcsec  
54'' x 46''  
noise  $\approx$  3.4 mJy/beam

# LOFAR-EoR experiment: Elais N1 central field



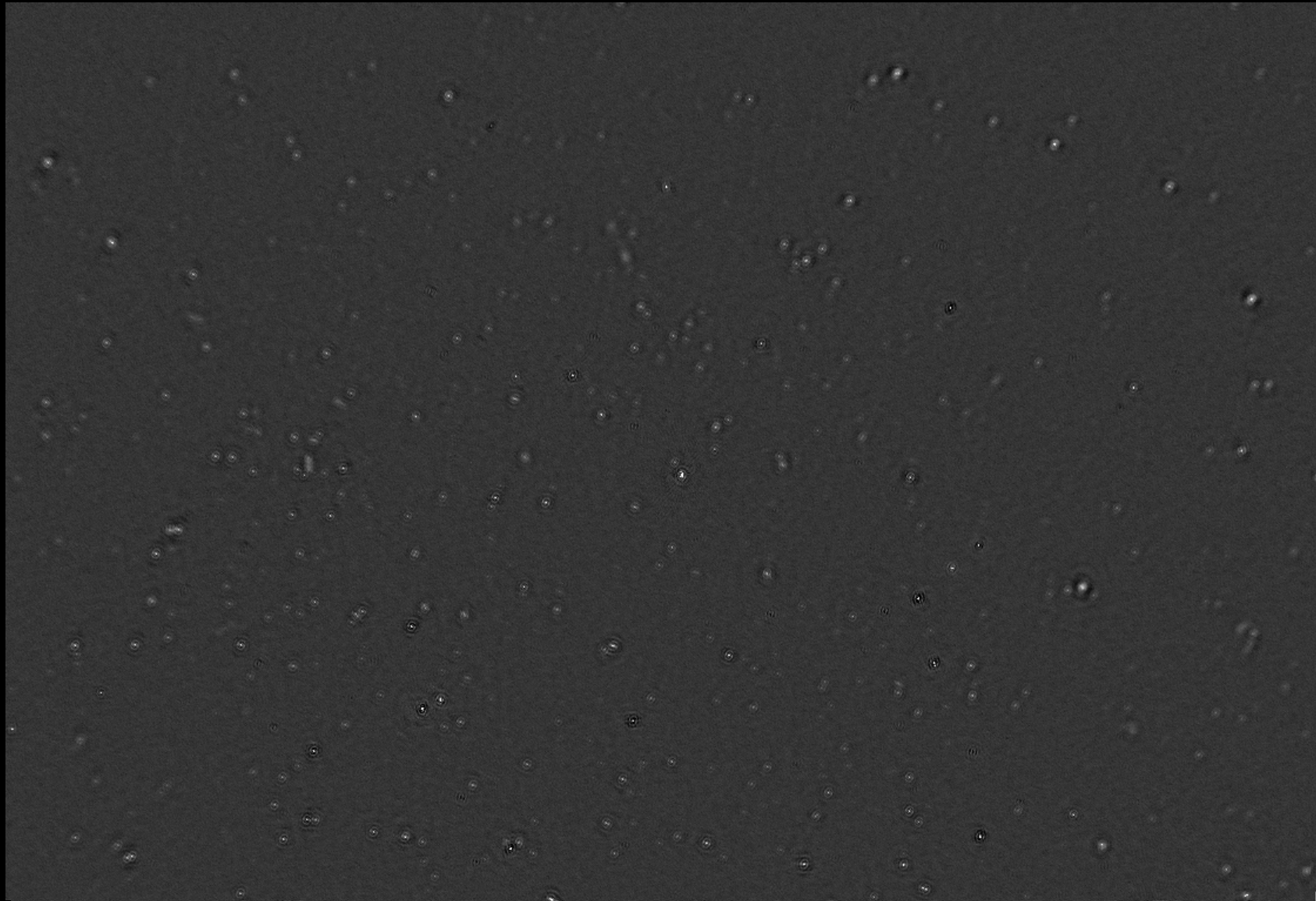
noise  
0.22 mJy/beam



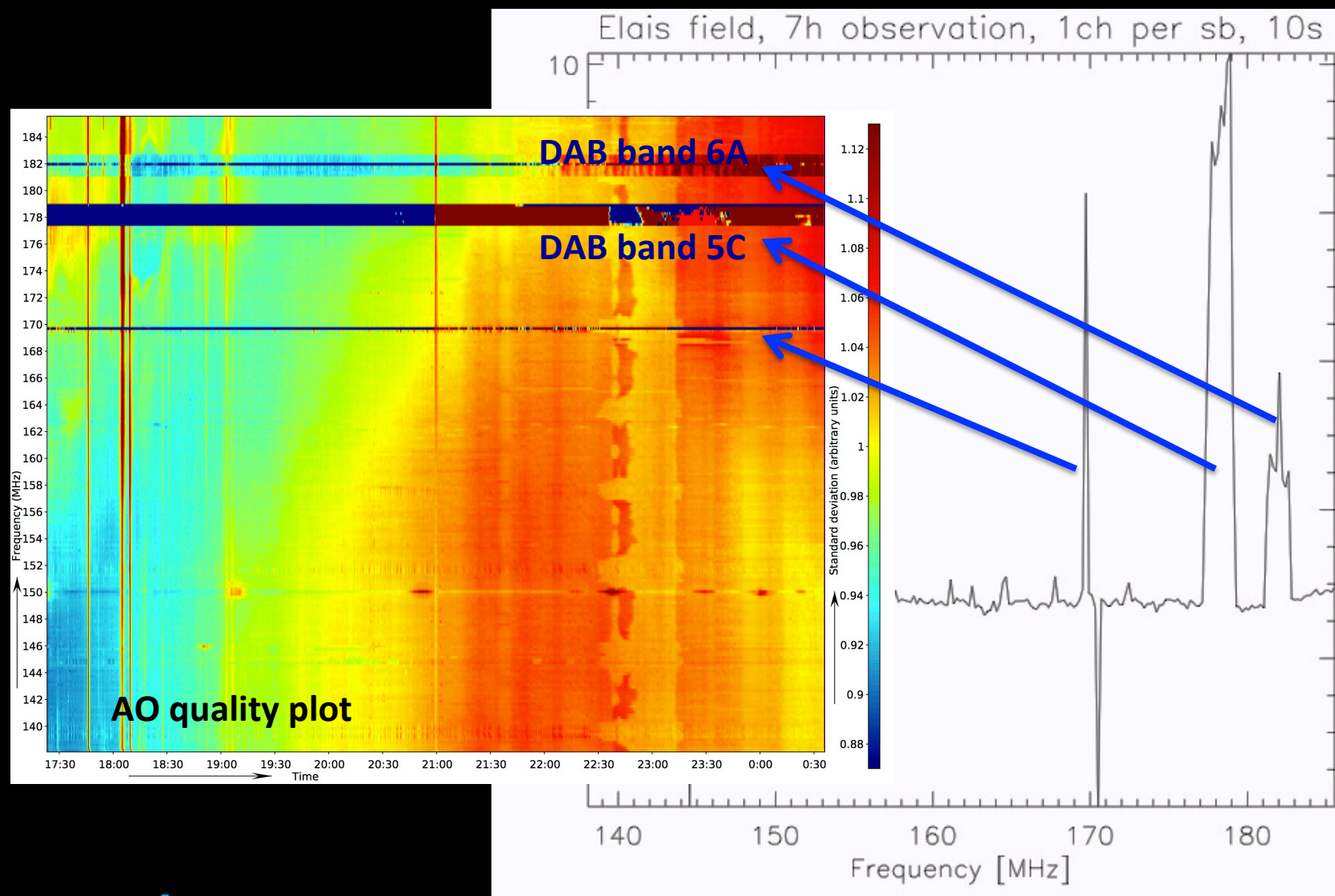


# LOFAR-EoR experiment: Elais N1 central field

---

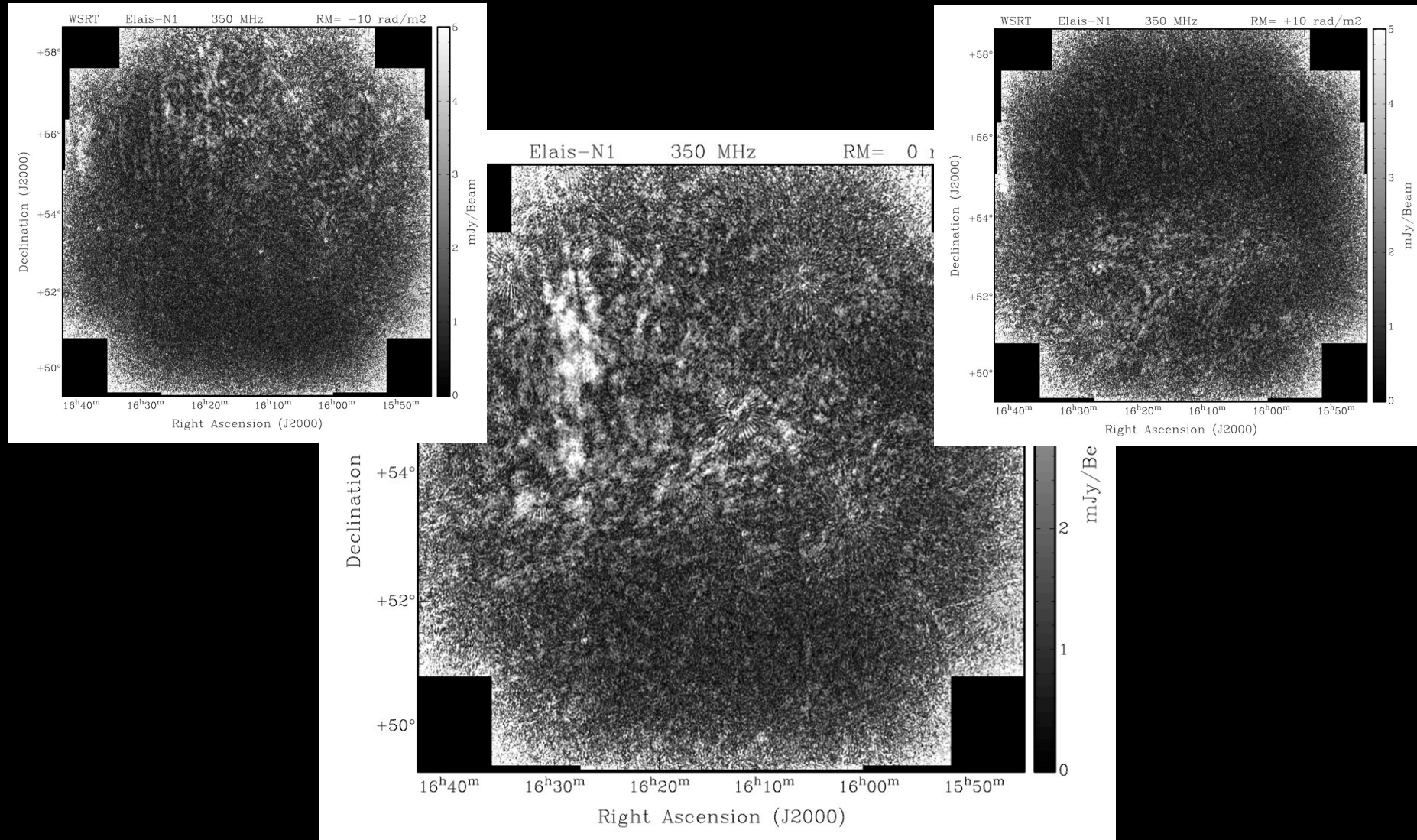


# LOFAR-EoR experiment: Elais N1 central field

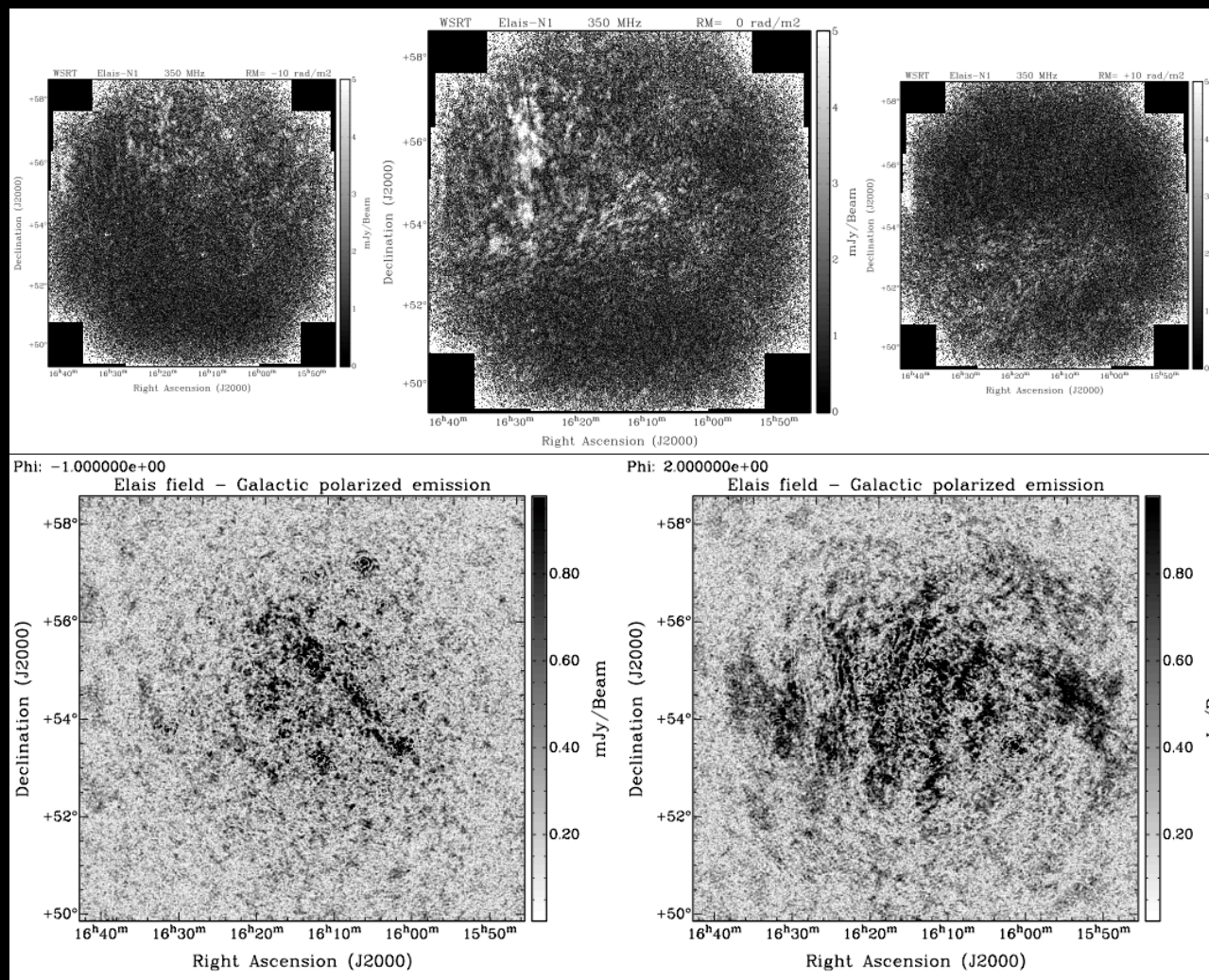




# LOFAR-EoR experiment: Elais N1 central field



# LOFAR-EoR experiment: Elais N1 central field





# LOFAR-EoR experiment: Elais N1 central field

noise  
0.1 mJy/beam

